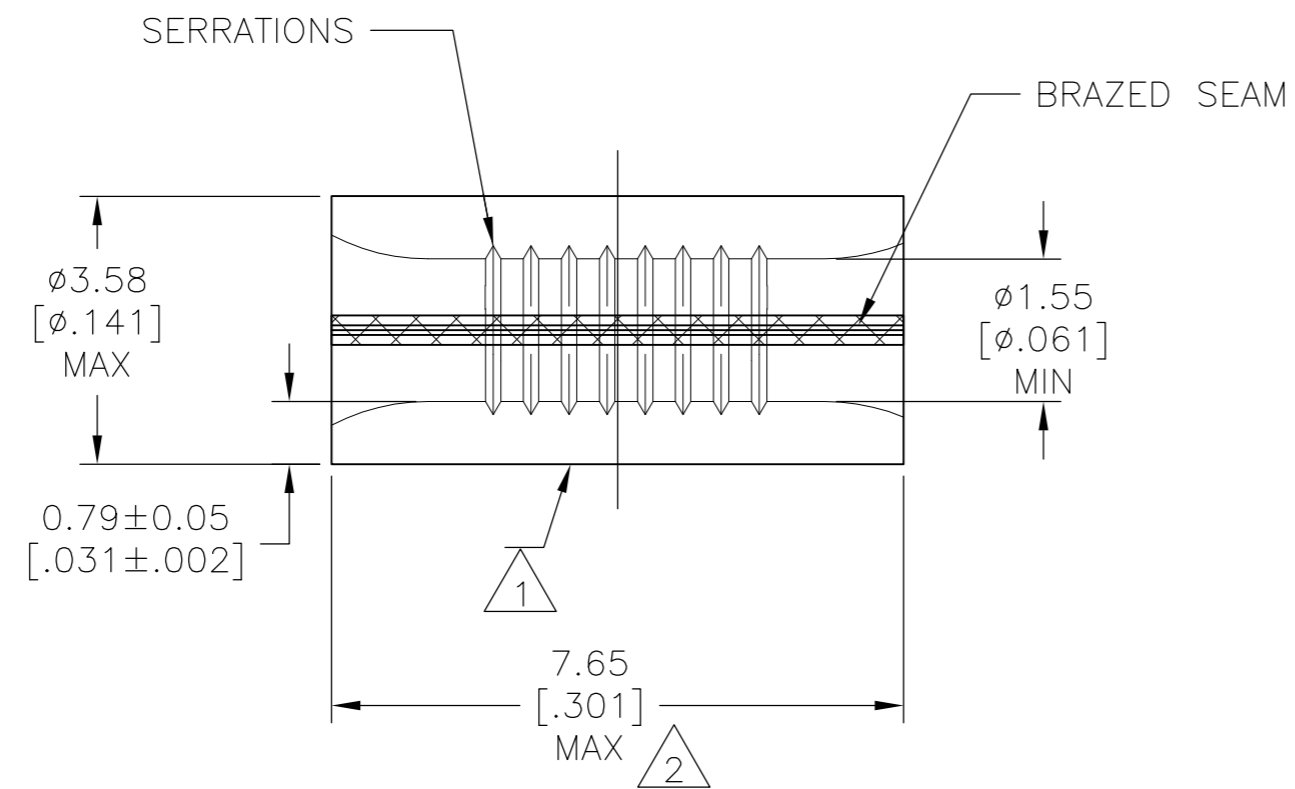


THIS DRAWING IS UNPUBLISHED. RELEASED FOR PUBLICATION  
 © COPYRIGHT - By - ALL RIGHTS RESERVED.

| LOC | DIST | REVISIONS |     |                            |         |     |      |
|-----|------|-----------|-----|----------------------------|---------|-----|------|
|     |      | P         | LTR | DESCRIPTION                | DATE    | DWN | APVD |
| G   | 14   | T         |     | REVISED PER ECO-110-012870 | 28APR11 | HMR | DR   |

**AMP**  
WIRE RANGE

22-16 AWG  
SOLID OR STRANDED



- 1 STAMP AMP 22-18\* APPROX AS SHOWN 22-16 SPLICES ARE STAMPED 22-18 IN ACCORDANCE WITH MILITARY SPEC SAE AS7928 COMMERCIAL WIRE RANGE IS 22-16
- 2 MAXIMUM LENGTH DOES NOT INCLUDE MANUFACTURING TABS.
- 3 GOLD PLATE 0.00127 [0.000050] MIN EXT THK PER ASTM B 488 TYPE 1, CODE C OVER NICKEL PLATE 0.00127 [0.000050] MIN EXT THK PER SAE AMS QQ-N-290. OVER Cu FLASH PER SAE AMS 2418.
- 4 CSA CERTIFIED LR7189, 22-16 AWG SOLID OR STRANDED
- 5 UL LISTED E13288, 22-16 AWG SOLID OR STRANDED.
- 6 MATERIAL: COPPER PER ASTM B-152 ANNEALED
- 7 0.00254 [0.000100] MIN EXT THK TIN PLATE PER ASTM B-545
- 8 0.00254 [0.000100] MIN EXT THK TIN-LEAD (60/40) PLATE PER SAE-AMS-P-81728

| MAX TEMP | APPROVALS | QTY  | PACKAGE TYPE                         | PART NO     |
|----------|-----------|------|--------------------------------------|-------------|
| 170°C    | 4 5       | 100  | LOOSE PIECE, BOX SPECIAL (NO WINDOW) | 7 8-34130-5 |
| 170°C    | 4 5       | 100  | LOOSE PIECE, BOX                     | 7 8-34130-1 |
| 170°C    | --        | 1000 | LOOSE PIECE                          | 8 34130-4   |
| 260°C    | --        | 1000 | LOOSE PIECE                          | 3 34130-3   |
| 170°C    | 4 5       | 1000 | LOOSE PIECE                          | 7 34130     |

|  |  |   |
|--|--|---|
| <b>AMP INCORPORATED<br/>CUSTOMER SERVICE SYSTEMS</b>                             |  | MAX RECOMMENDED OPERATING TEMPERATURE:<br>SEE TABLE   |
| FOR ADDITIONAL PRODUCT INFORMATION OR COPIES OF DRAWINGS AND TECHNICAL DOCUMENTS | PRODUCT INFORMATION CENTER<br>1-800-522-6752 | VOLTAGE RATING:<br>N/A  |
| FOR APPLICATION TOOLING INFORMATION  | TOOLING ASSISTANCE CENTER<br>1-800-722-1111  | CIRCULAR MIL AREA:<br>0.26-1.65mm <sup>2</sup> [509-3,260]<br>SOLID OR STRANDED   |
| FOR ORDER ENTRY  | 1-800-526-5142                               | THIS DRAWING IS A CONTROLLED DOCUMENT FOR AMP INCORPORATED. IT IS SUBJECT TO CHANGE AND THE CONTROLLING ENGINEERING ORGANIZATION SHOULD BE CONTACTED FOR THE LATEST REVISION. |

|   |                     |                                  |   |                    |
|---|---------------------|----------------------------------|---|--------------------|
| THIS DRAWING IS A CONTROLLED DOCUMENT.                                      |                     | DWN<br>TA BRINKMAN<br>4-14-93    | <b>TE</b> TE Connectivity               |                    |
| DIMENSIONS:<br>mm [INCHES]  |                     | CHK<br>DA PATTERSON<br>4-14-93   |   |                    |
| TOLERANCES UNLESS OTHERWISE SPECIFIED:                                      |                     | APVD<br>J MECKLEY<br>4-14-93     | NAME<br>SPLICE, PARALLEL,<br>SOLISTRAND |                    |
| 0 PLC ± -<br>1 PLC ± -<br>2 PLC ± -<br>3 PLC ± -<br>4 PLC ± -<br>ANGLES ± - |                     | PRODUCT SPEC<br>APPLICATION SPEC | SIZE<br>A2                              | CAGE CODE<br>00779 |
| MATERIAL<br>6   | FINISH<br>SEE TABLE | WEIGHT<br>-                      | DRAWING NO<br>C=34130                   | RESTRICTED TO<br>- |
| CUSTOMER DRAWING  |                     |                                  | SCALE<br>10:1                           | SHEET<br>1 OF 1    |